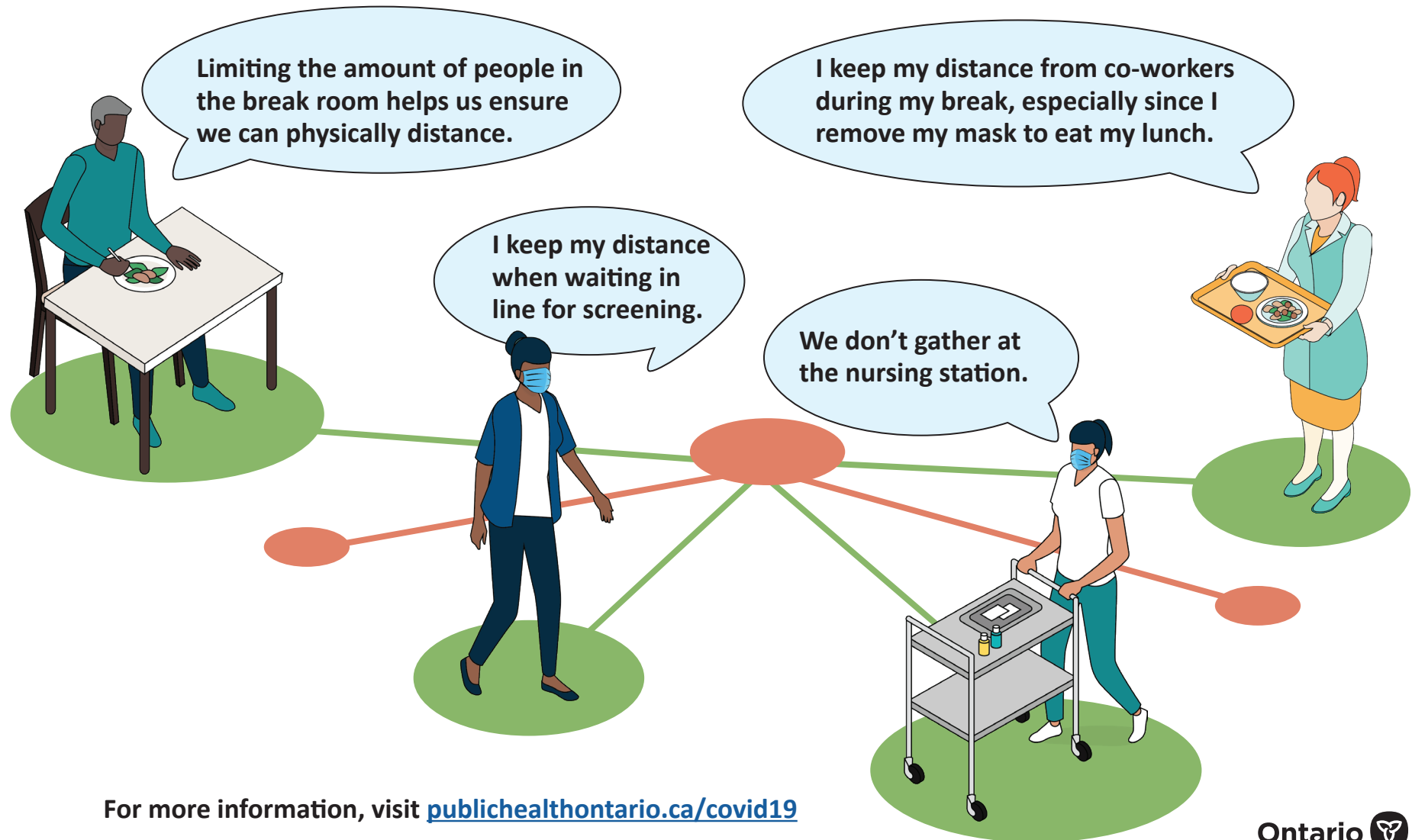


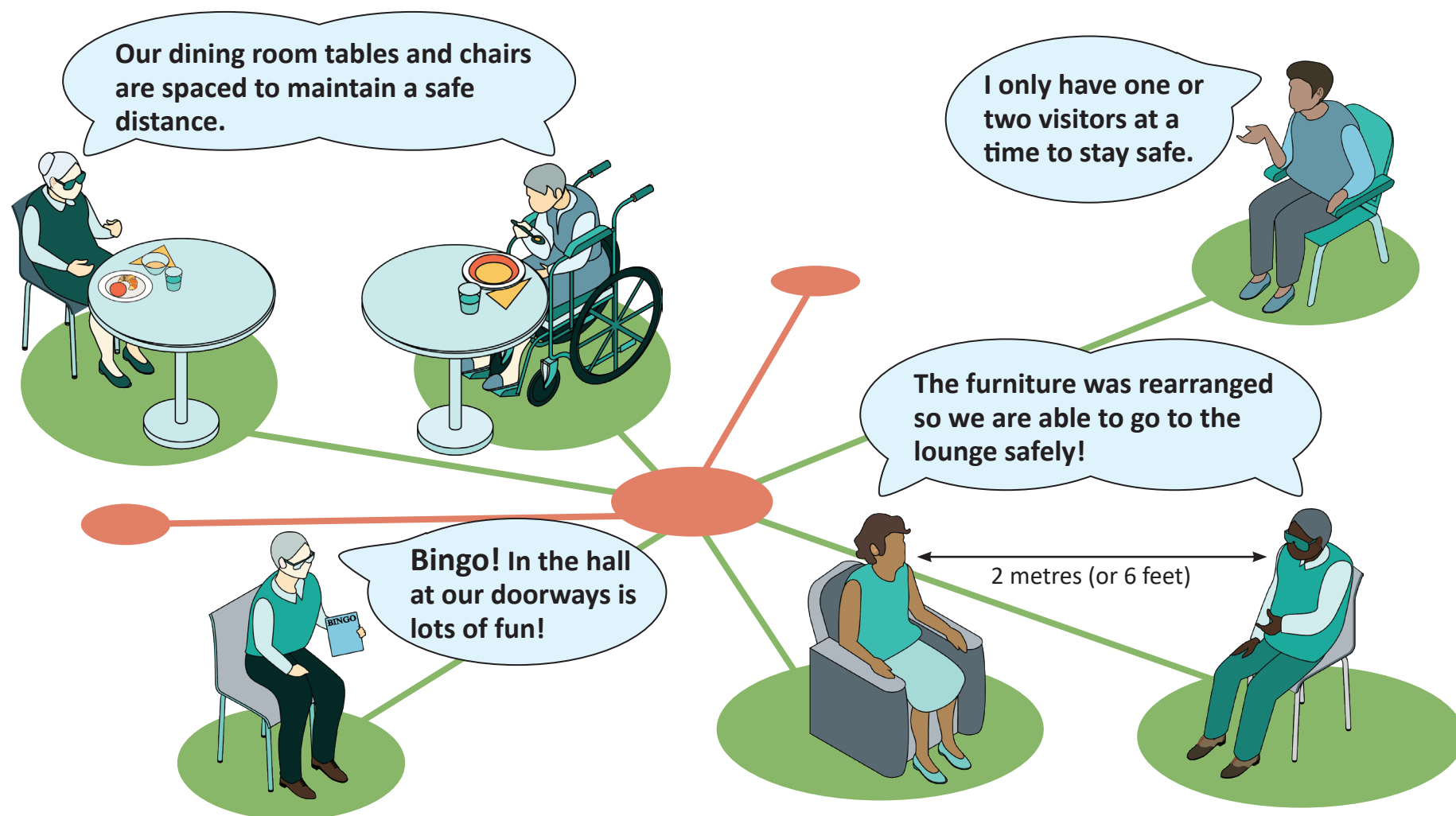
How to physically distance in long-term care

Physical distancing prevents droplets from an infected person from being spread into the environment and onto people within 2 metres (or 6 feet) distance.



How to physically distance in long-term care

Physical distancing prevents droplets from an infected person from being spread into the environment and onto people within 2 metres (or 6 feet) distance.



For more information, visit publichealthontario.ca/covid19