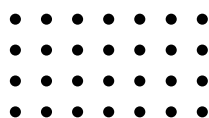




2024-2025 Annual Report

St. Joseph's Continuing Care Centre
14 York Street Cornwall, ON K6J 5T2
WWW.SJCCC.CA



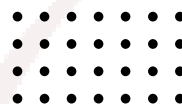
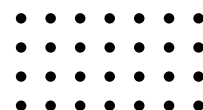


Table of Contents

- EXECUTIVE SUMMARY
- ABOUT US
- MISSION, VISION, AND VALUES
- FINANCIALS
- STATISTICS
- HIGHLIGHTS
- BOARD OF DIRECTORS
- CONTACT

Executive Summary



On behalf of the Board of Directors of St. Joseph's Continuing Care Centre (SJCCC), we are proud to present our 2024-2025 Annual Report.

This past year has been one of growth and promise, marked by the introduction of new programs, new spaces, and new faces. We invite you to explore the exciting updates we have to share—the future is bright at SJCCC.

As always, we are reminded that our commitment to compassionate, person-centred care extends far beyond the bedside. Our families, staff, physicians, volunteers, and stakeholders remain at the heart of everything we do. Their unwavering support enables us to continue providing exceptional care to seniors in our community.

We are honoured to serve in the spirit of our founders, the Religious Hospitallers of St. Joseph.

Sincerely,

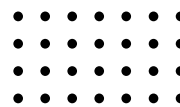


PAUL DESNOYERS
CHAIRPERSON



GIZANNE LAFRANCE-ALLAIRE
EXECUTIVE DIRECTOR

About Us



St. Joseph's Continuing Care Centre (SJCCC) is a dynamic healthcare hub in the heart of downtown Cornwall, Ontario -- home to both Hotel Dieu Hospital and St. Joseph's Villa. With 208 beds, SJCCC provides leading-edge Rehabilitation and Long-Term Care services in a person-centered approach to care.

With over 128 years of compassionate care rooted in the Cornwall community, SJCCC is proudly accredited by CARF International and affiliated with Catholic Health International—a global network of healthcare providers with locations across Canada (Ontario, New Brunswick, Nova Scotia), the U.S. (Illinois and Wisconsin), and the Dominican Republic.

Cornwall is a growing city in Eastern Ontario with a progressive spirit. Strategically located along the St. Lawrence River and Highway 401, the city offers easy access to major urban centers like Montreal and Ottawa, both just an hour away. As one of Ontario's key border crossings into the U.S., Cornwall blends small-city charm with global connectivity, making it an ideal place to live and work.

Strategic Priorities

INNOVATIVE CARE
MAGNET EMPLOYER
SENIOR-FRIENDLY COMMUNITY
INTEGRATED CAMPUS OF CARE



Mission, Vision, & Values

Mission

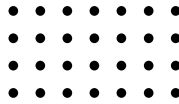
IN THE SPIRIT OF THE RELIGIOUS
HOSPITALLERS OF
ST. JOSEPH, WE REVEAL GOD'S LOVE AND
MERCY THROUGH COMPASSIONATE CARE
FOCUSED ON THE BODY, MIND, AND, SOUL OF
ALL THOSE WHOSE LIVES WE TOUCH.

Vision

TO BE A BEACON OF HOPE ON THE JOURNEY
TO LIVING YOUR BEST LIFE.

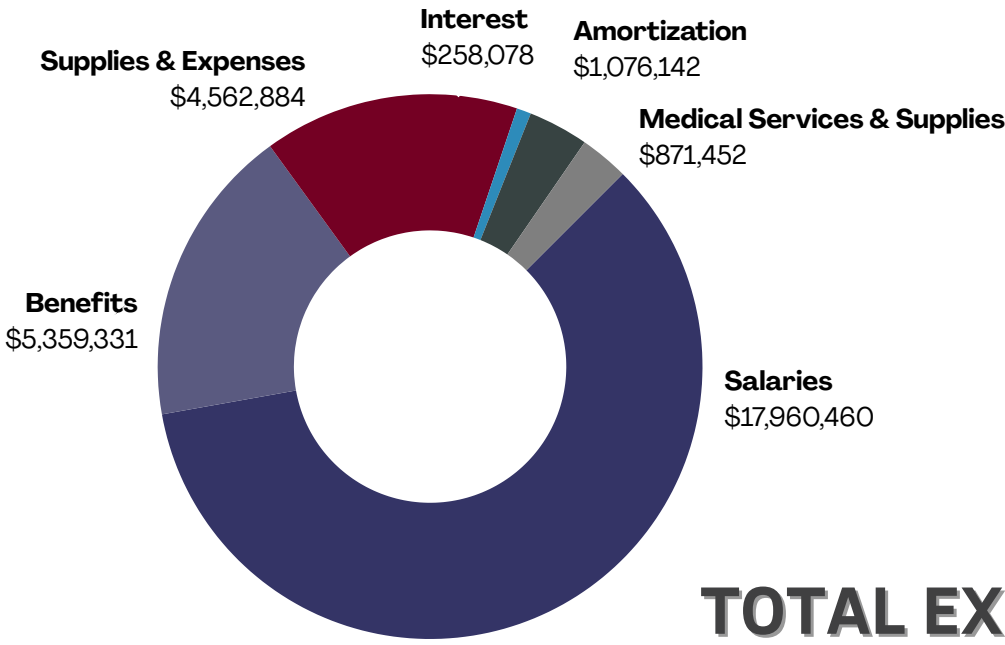
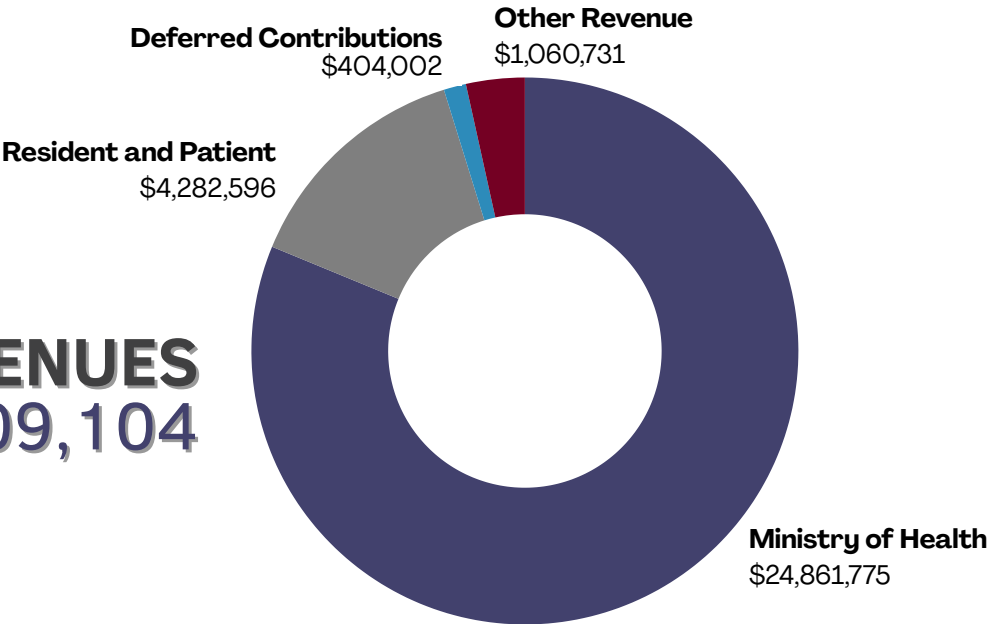
Values

DIGNITY, SPIRITUALITY, INNOVATION,
ACCOUNTABILITY, EQUITY, SAFETY, HOPE



Our Financials

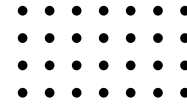
TOTAL REVENUES
\$30,609,104



TOTAL EXPENSES
\$30,088,347

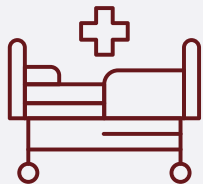
APRIL 1, 2024 - MARCH 31, 2025

Statistics 2024-2025



LONG-TERM
CARE BEDS

150



COMPLEX
CARE BEDS

58



EMPLOYEES

459



MEDICAL
STAFF

6



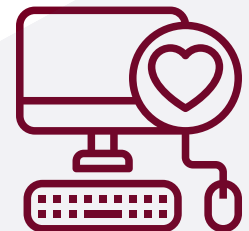
INPATIENT
REHAB ADMISSION

487



RESIDENT/PATIENT
SATISFACTION

99.3%



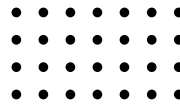
VIRTUAL WARD
ADMISSIONS

377



AVERAGE LENGTH
OF STAY - REHAB

42.52



Highlights

Rehabilitation

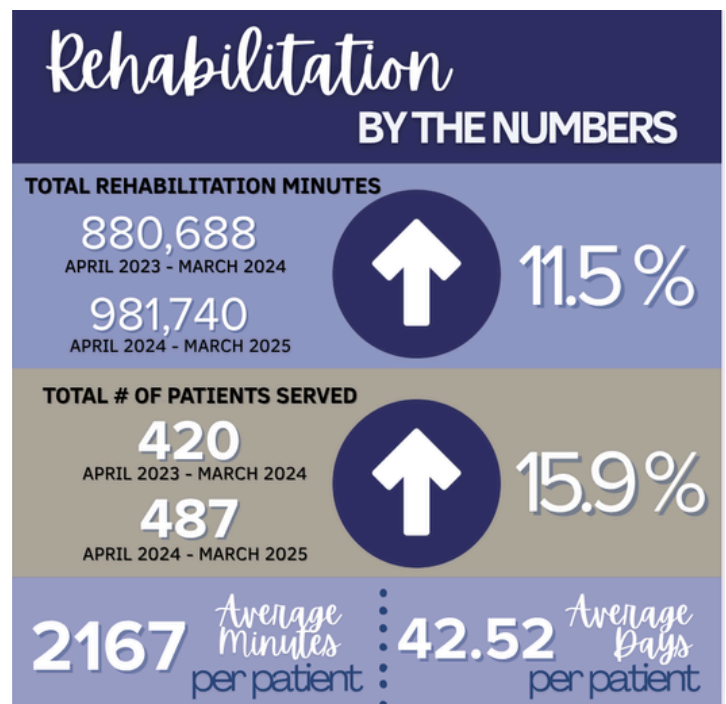


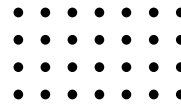
This year, SJCCC opened a new 2,400-square-foot physical therapy space, offering patients a dedicated environment to support one another on their rehabilitation journeys.

Centrally located, the space is designed to enhance care and foster a strong sense of community.

Filled with natural light and equipped with the latest physical therapy tools, it provides everything patients need to succeed.

The new physical therapy space has significantly improved patient rehabilitation outcomes, including more frequent therapy sessions and a reduced average length of stay. A scheduled approach to care has empowered patients to take an active role in their recovery, leading to consistent attendance, fewer missed sessions, and an impressive **94.5% overall program engagement rate**.





Highlights

Remote Care Monitoring (RCM)

In 2024, our Remote Care Monitoring (RCM) program expanded its ability to serve the Francophone population. Working with the Ontario Health Team (OHT), a pilot project was developed to bring health equity in RCM to Francophones across Ontario.



4.05 DIRECT CARE HOURS
PER RESIDENT
PER DAY

To support the continuation of staffing initiatives, implemented by the Ministry of Long-Term Care, SJCCC exceeded its target per resident, per day, for direct care hours.

REHABILITATION PATIENT TESTIMONIAL

“Thanks to the staff at St. Joe’s. Everything was so good, and it was so well-organized. From the staff who came to wash us up in the morning and have the beds made before breakfast to the gym schedule, it all moved so well. I was amazed at how good it all was.”

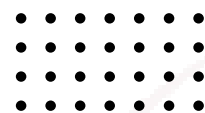
- Evelyn. S

Behaviour Supports Ontario (BSO)

This year, SJCCC created eight new Behavioural Supports Ontario (BSO) positions, adding **11,700 hours of direct care** for residents. These specially trained team members provide behavioural health services to older adults experiencing, or at risk of developing, responsive behaviours. Such behaviours may be associated with dementia, complex mental health needs, substance use, or other neurological conditions.

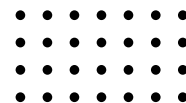


Board of Directors



Paul Desnoyers, Chairperson
Mathieu Despatie, Vice-Chairperson
Elizabeth MacLennan, Past-Chairperson, Secretary-Treasurer
Sister Patricia Cuddihy
Dr. Sally Grant
Chantal Tessier
Stephanie Sanborn
Rayanne Gazdar
Katie Michaud
Anne Vincelli
Dennis Richer
Marc Leduc
Deacon Guy Cote
Dr. Subhash Patel, Medical Director, Chief of Staff *
Gizanne Lafrance-Allaire, Executive Director *
Lynn Theriault, Chief Nursing Executive *

*non-voting



Contact Us



613-933-6040



info@sjccc.ca



www.sjccc.ca

